



# H40-60XT SERIES

INTERNAL COMBUSTION COUNTERBALANCED FORKLIFT

**STRONG PARTNERS.  
TOUGH TRUCKS.™**

**[WWW.HYSTER.COM](http://WWW.HYSTER.COM)**

# CUSTOMIZATION THAT COSTS YOU LESS

Business is all about maintaining momentum in the face of change. The sense that, no matter what is happening in the industry, you are moving forward. Manufacturing, in particular, is in the midst of a technological overhaul that is transforming the look, systems, and processes of the modern factory.<sup>1</sup> So how can a business keep pace with the revolution and stay ahead of the competition? Customization.

**What if you could customize your forklifts to your applications and tasks, to meet changing customer demands and your company's productivity goals?**

With the economical Hyster® XT truck, you'll get access to the same Hyster® Variable Power Technology™ that's in our premium Fortis® series. With this capability, you can customize your performance and fuel efficiency based on your needs. You'll be able to run in fuel-efficient mode when production is less demanding, yet switch to a higher performance mode when deadlines are looming.





HYSTER

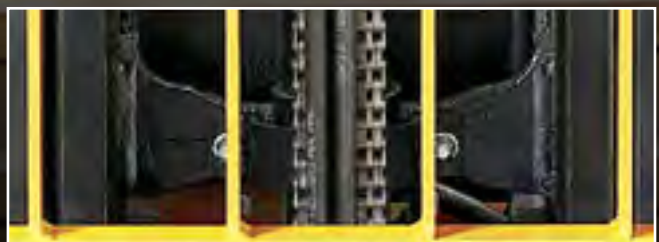
10 TC

HYSTER 60 XT

BSS



*The steer axle assembly is made of cast ductile iron. Some competitors use welded plate structures that can suffer from cracks or deformation from shock loading, or steel plate structures that can bend.*



*Mast channels are made from high-strength, rolled steel with cast cross members for strength and resistance to deflection.*



# **DURABLE PRODUCTS THAT REDUCE DOWNTIME**

59% of Fortune 500 companies experience 1.6 hours of downtime per week.<sup>2</sup>

**How much money is your company losing every minute you're down?**

By investing upfront in resources that feature longer service intervals, you have the ability to decrease your cost of operations, as well as increase uptime and efficiency. Industrial grade mast components, such as cast cross members and thicker channels, decrease deflection and increase strength. And when you have 6000 pounds of pressure sitting on the axle, you don't want any problems. You'll have a tough and durable cast steer axle with the Hyster® XT truck.

Hyster has engineered a patented stability system that every operator can appreciate. You'll find the Hyster Stability System (HSS®) requires less maintenance than the competition's system due to fewer grease points and longer service intervals than the competition. Fewer complicated parts means less risk of problems, enhancing uptime for your operation.

The benefit to your company is that you have the opportunity to minimize disruptions and downtime. As a result, you can increase your productivity and optimize your existing resources without having to purchase new equipment to meet changing demands.

# EVERYTHING ABOUT IT IS TOUGH. EXCEPT SERVICING IT.

Today's mechanics are faced with a continuous stream of new technology that must be quickly learned and mastered. They practically need an IT degree to diagnose the sensor and computer glitches in machinery. Manufacturers once assumed computerization would make repairs easier. The opposite has occurred.

What if you could service your trucks quickly and easily **without an IT degree?**

You won't realize the full benefits of the Hyster® XT lift truck until after your first service event experience. That's when its "cowl-to-counterweight" access and one-piece floorplate reveal other engineering advantages designed to keep your truck, and your operation, running smoothly. Configured so you don't have to remove the LP tank to open the hood, the Hyster XT series is clearly easier for you to service.





*Integrated dash display shows error codes and warning indicators, reducing downtime to perform truck diagnosis.*

*Rear-opening, one-piece hood and easy-to-remove, one-piece floor plate which requires no tools.*



# INNOVATIVE TRUCKS ENGINEERED TO MEET THE MOST DEMANDING APPLICATIONS

For more than 80 years, Hyster has been conquering the world's most demanding applications. In the 1920's Hyster started as a manufacturer of lifting machines used in the rigorous logging industry of the United States' Pacific Northwest. A few years later the first forklift trucks were invented and the Hyster brand quickly gained its reputation for rugged quality. Hyster® lift trucks are designed to lower your cost of operations. Every truck we make — gasoline, LPG, diesel and electric — is purpose-built to excel in its application. Every truck is also backed by an unmatched network of specialists.



**Dealer Network** — Our Dealer Network can offer the expertise of fleet managers, parts suppliers, capital procurement specialists and trainers. Carefully chosen dealers fully understand customer applications, assist in selecting the right lift truck and provide fast, reliable support.



**Hyster Fleet Services** — Even if you operate other brands, we can manage your maintenance and replacement plan. We can offer complete fleet analysis, fleet history summary and a cost-effective proposal for replacement and scheduled maintenance.



**Parts** — With genuine Hyster® replacement parts and UNISOURCE™ parts for all makes of lift trucks, we are your one-stop source for lift truck parts. In fact, we offer more than 7 million part number crosses for most brands of materials handling and other in-plant mobile equipment.



**Rental Products** — When leasing or buying isn't a practical option, we have access to more than 14,000 units for short- and long-term rental. We'll help you maintain output in a cost-effective manner.



**Hyster Capital** — We can arrange solutions for special financing requirements, taking the difficulties out of buying the equipment you need. Whether you purchase or lease a new or used lift truck, Hyster Capital offers superior service and competitive rates.



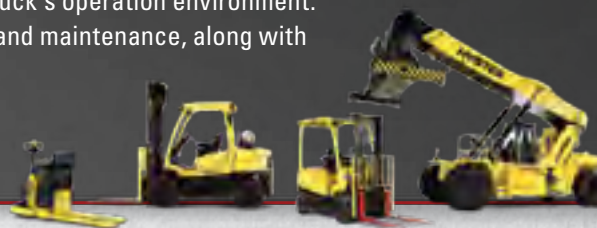
**Special Products Engineering Department (SPED)** — Different materials require different handling. That's why we can work with you to customize your lift trucks. From strobe lights to specially made forks, SPED has the tools to help you get the job done right.



**Operator Training** — Proper education in operating lift trucks minimizes the risk of injuries due to accidents while increasing productivity. Hyster offers OSHA-compliant materials that support the training of qualified operators.




**Service** — Your local Hyster® dealer offers a flexible, customized and comprehensive maintenance plan based on each lift truck's operation environment. Hyster service programs offer scheduled inspections and maintenance, along with quick, responsive service dispatched to your location.



Hyster Company  
P.O. Box 7006  
Greenville, North Carolina  
27835-7006  
Part No. H40-60XT/B  
10/2016 Litho in U.S.A.

Visit us online at [www.hyster.com](http://www.hyster.com) or call us at **1-800-HYSTER-1**.

Hyster, , and STRONG PARTNERS. TOUGH TRUCKS. and MONOTROL are registered trademarks in the United States and certain other jurisdictions. Hyster products are subject to change without notice.

All trucks shown with optional equipment. © 2016 Hyster Company. All rights reserved.

<sup>1</sup> Bono, R. and Pillsbury, S. (2016, January 21). 2016 Industrial Manufacturing Trends. Retrieved from: <http://www.strategyand.pwc.com/perspectives/2016-manufacturing-trends>

<sup>2</sup> Assessing the Financial Impact of Downtime, Vision Solutions, 2008